



Capacitive Sensors

Series 80 - PNP

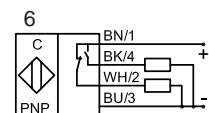
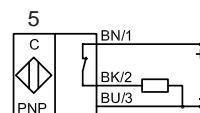
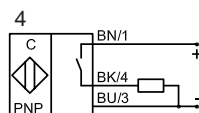
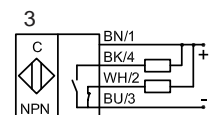
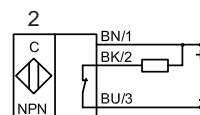
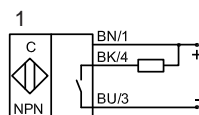
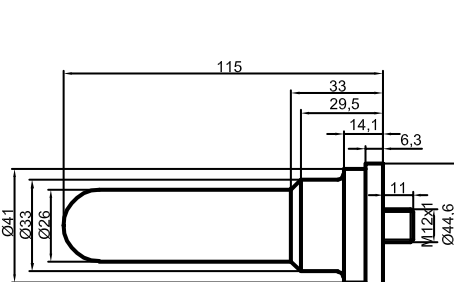
Housing $\varnothing = 26$ mm

- Housing material PTFE
- SIP / CIP 121° C
- Ideal of detection of chemically aggressive media
- Suitable for foods and pharmaceutical applications
- Housing optimised for fitting system (e.g. with art. no. 196360, art. no. 196361 and art. no. 196362)
- Withflange connector M 12 x 1

Certificate:



Technical data	Non-flush mountable
Operating distance S_n	5 mm
Operating distance min./max. adjustable	0...20 mm
Electrical version	4-pin DC
Output	Antivalent (NO + NC)
Type NPN	
Art.-No.	
Connection diagram No..	
Type PNP	KAS-80-26-A-PTFE-PFS1-Y5
Art.-No.	KA 0549
Connection diagram No.	6
Operating voltage (U_B)	10...35 V DC
Output current max. (I_o)	2 x 250 mA
Load current min.	-
Voltage drop max. (U_d)	≤ 2.0 V
Permitted residual ripple max.	10%
No-load current (I_o)	Typ. 15 mA
Frequency of operating cycles max.	50 Hz
Permitted ambient temperature	-25...+100° C / CIP 121° C (zero-current)
LED-display	Green/yellow
Protective circuit	Built-in
Degree of protection IEC 60529	IP 67
Norm	EN 60947-5-2
Connection	Flange connector M 12 x 1
Housing material	PTFE (FDA 21 CFR 177.1550)
Active surface	PTFE (FDA 21 CFR 177.1550)
Lid	PA



Made in Germany

All specifications are subject to change without notice. (26.01.2009)