



**Capacitive Sensors**  
**Series 70 - NPN**  
**Series 80 - PNP**



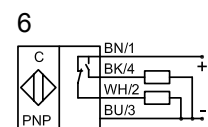
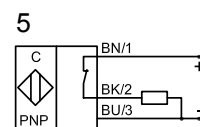
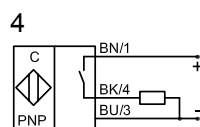
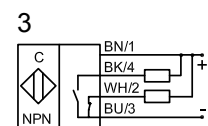
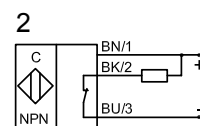
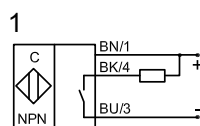
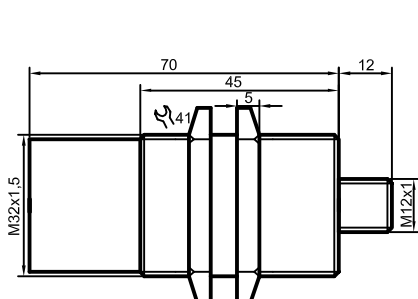
- Housing M 32 x 1.5
- Housing material: Brass
  - Sensing distance 2...30 mm adjustable
  - With flange connector M 12 x 1

Certificate:



<b>Technical data</b>	Non-flush mountable
Operating distance $S_n$	20 mm
Operating distance min. / max. adjustable	2...30 mm
Electrical version	4-pin DC
Output	Antivalent (NO + NC)
<b>Type NPN</b>	
<b>Art.-No.</b>	
Connection diagram No..	
<b>Type PNP</b>	<b>KAS-80-34-A-M32-PTFE/MS-Y3-NL</b>
<b>Art.-No.</b>	<b>KA 0721</b>
Connection diagram No.	6
Operating voltage ( $U_B$ )	12...30 V DC
Output current max. ( $I_o$ )	2 x 200 mA
Load current min.	-
Voltage drop max. ( $U_d$ )	≤ 2.0 V
Permitted residual ripple max.	5 %
No-load current ( $I_o$ )	< 15 mA
Frequency of operating cycles max.	50 Hz
Permitted ambient temperature	-25...+70 °C
LED-display	Yellow
Protective circuit	Built-in
Degree of protection IEC 60529	IP 67
Norm	EN 60947-5-2
Connection	Flange connector M 12 x 1
Housing material	Brass
Active surface	PTFE (FDA 21 CFR 177.1550)
Lid	PA / PPO

All specifications are subject to change without notice. (28.01.2010)



**Made in Canada**