



SA7560 kit

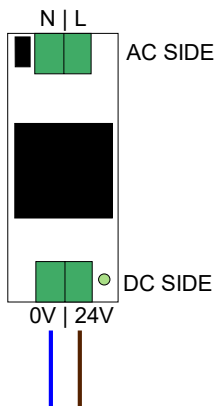
The purpose of this kit is to retrofit DC voltage KSA-80 amplifiers into AC voltage applications that previously used the now discontinued AC voltage KSA-250 amplifiers.

The parts included in this kit allow the DC voltage KSA-80 amplifiers to match the function of the discontinued amplifiers.

Wiring

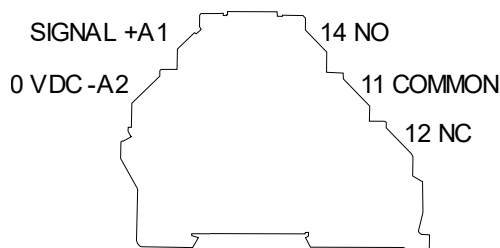
Power Supply

1. Connect 120 or 240 VAC to N and L.



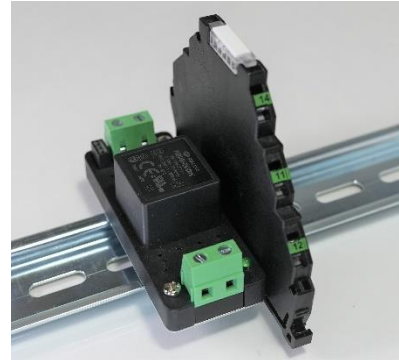
2. Connect the brown wire of the KSA-80 amplifier to 24 VDC.
3. Connect the blue wire of the KSA-80 amplifier to 0 VDC.

Relay



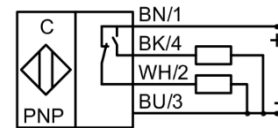
4. Connect the black wire (NO signal) of the KSA-80 amplifier to +A1.
5. Connect 0 VDC to -A2.
6. Connect your output to the relay contacts 11, 12, and 14.

Note : the white wire on the KSA-80 amplifier (normally closed signal) is not used if present.



Compatible with:

1. AK0005 (M32 + 2M)
2. AK0006 (M32 + 5M)
3. 561100 (M22/M32 + 2M)
4. and all other KSA-80 amplifiers.



Wiring Diagram for KSA-80 Amplifiers