



## Capacitive Sensors

### Series 80 - PNP



Housing M 8 x 1

- Housing material: Stainless steel VA
- Sensing distance 0.5...4 mm adjustable with 270° potentiometer
- With flange connector M 8 x 1

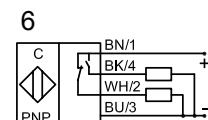
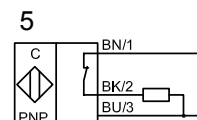
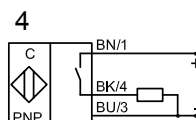
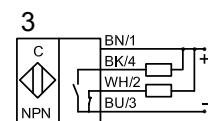
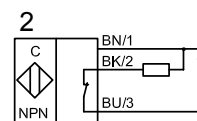
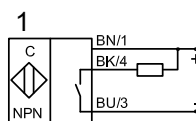
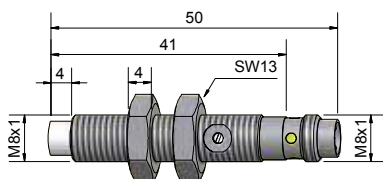
Certificate:



Technical data	Non-flush mountable
Operating distance $S_n$	2 mm
Operating distance min. / max. adjustable	0.5...4 mm
Electrical version	3 pin DC
Output function	Normally open
<b>Type NPN</b>	
<b>Art.-No.</b>	
Connection diagram No.	
<b>Type PNP</b>	
<b>KAS-80-A21-S-Y7</b>	
<b>Art.-No.</b>	
<b>800 130</b>	
Connection diagram No.	
4	
Operating voltage ( $U_b$ )	10...35 V DC
Output current max. ( $I_o$ )	150 mA
Voltage drop max. ( $U_d$ )	≤ 2.0 V
Permitted residual ripple max.	10 %
No-load current ( $I_o$ )	Typ. 15 mA
Frequency of operating cycles max.	50 Hz
Permitted ambient temperature	-25...+70 °C
LED-display	Yellow
Protective circuit	Built-in
Degree of protection IEC 60529	IP 67*
Norm	EN 60947-5-2
Connection	Flange connector M 8 x 1
Housing material	VA No. 1.4305
Active surface	PTFE (FDA 21 CFR 177.1550)
Lid	-
<b>Accessories</b> (is delivered with the sensor)	<b>2 pieces nuts M 8</b>
For matching connectors please see our selection of accessories.	

All specifications are subject to change without notice. (06/2014)

\* With sealed potentiometer screw



Made in Germany