



Capacitive Evaluation Unit

Series 70-250 - NPN
Series 80-250 - PNP

Housing 75 x 47 x 30 mm
• For capacitive sensors KS-250-M32(-Y)

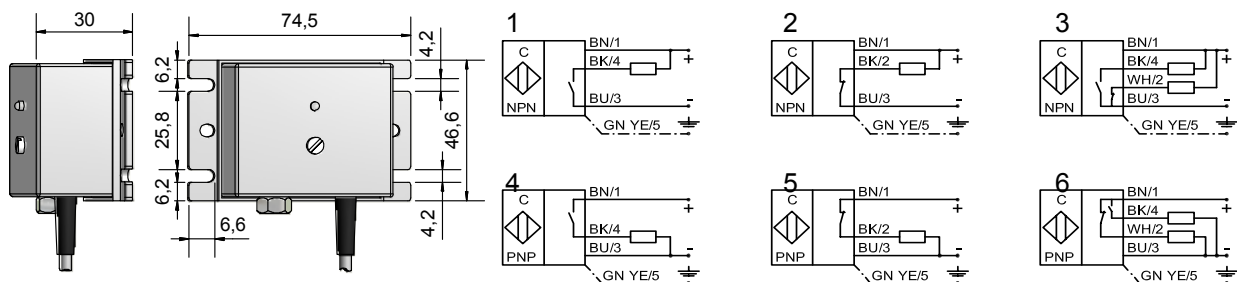
Certificate:



Technical data

Electrical version	5-wire DC	5-wire DC
Output function	Antivalent	Antivalent
Type NPN	KSA-70-250-A-M32-2m	KSA-70-250-A-M32-Y-2m
Art.-No.	AK 0003	AK 0007
Type PNP	KSA-70-250-A-M32-5m	KSA-70-250-A-M32-Y-5m
Art.-No.	AK 0004	AK 0008
Connection diagram No.	3	3
Type PNP	KSA-80-250-A-M32-2m	KSA-80-250-A-M32-Y-2m
Art.-No.	AK 0005	AK 0009
Type PNP	KSA-80-250-A-M32-5m	KSA-80-250-A-M32-Y-5m
Art.-No.	AK 0006	AK 0010
Connection diagram No.	6	6
Operating voltage (U_B)	10...35 V DC	10...35 V DC
Output current max. (I_o)	2 x 250 mA	2 x 250 mA
Voltage drop max. (U_d)	< 2.5 V	< 2.5 V
Permitted residual ripple max.	10 %	10 %
No-load current (I_o)	Typ. 15 mA	Typ. 15 mA
Frequency of operating cycles max.	50 Hz	50 Hz
Permitted ambient temperature	-25...+70 °C	-25...+70 °C
LED-display	Green / yellow	Green / yellow
Protective circuit	Built-in	Built-in
Degree of protection IEC 60529	IP 65	IP 65
Norm	EN 60947-5-2	EN 60947-5-2
Connection cable	2 m PVC, 5 x 0.34 mm ²	2 m PVC, 5 x 0.34 mm ²
Housing material	PA	PA

All specifications are subject to change without notice. (06/2014)



Made in Germany