



## Capacitive Filling Level Probe - KFI

Series: **-L&V&L**

Analogue voltage output 0...10 V

2 programmable limit value switching points

- Integrated evaluation electronics
- Housing material: GFK, 16 mm Ø
- Connection head and process connection stainless steel VA no. 1.4305
- Process connection G1"
- Multifunction probe: Automatic identification of NPN- / PNP function
- Normally open / normally closed function switchable
- Probe length max. 1000 mm
- Electronic lock

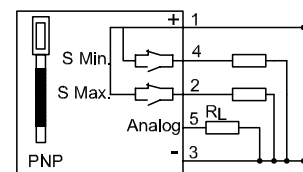
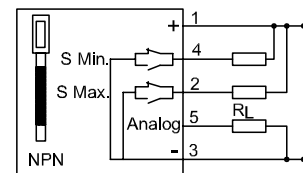
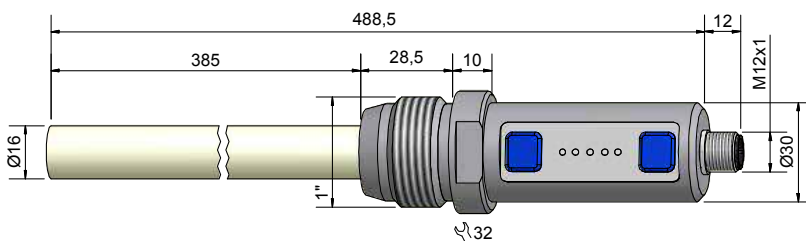
Certificate:



### Technical data

Active zone [mm]	300 mm
Electrical version	5 - pin DC
Output function	Analogue, 2 limit value switching points, Normally open / normally closed switchable
<b>Type</b>	<b>KFI-1-2-385-300-UL-GFK/VA-G1"-Y10</b>
<b>Art.-No.</b>	<b>KI 0003</b>
Operating voltage ( $U_B$ )	18...30 V DC
Permitted residual max.	5 %
Load resistance ( $R_L$ )	$\geq 2$ K Ohm
Output current ( $I_a$ )	100 mA
Power consumption (outputs no-load)	0,8 W
Analogue output	0...10 V
Switching frequency max.	1 Hz
Permitted ambient temperature	-25...+55 °C
Permitted ambient temperature (for active zone)	-25...+100 °C
Pressure	10 bar
LED-Display	Green / yellow
Protective circuit	Built-in
Degree of protection IEC 60529	IP 67
Norm	EN 60947-5-2*
Connection	Flange connector M 12 x 1
Housing material	VA No. 1.4305 / polyester
Active zone	GFK

\*Where applicable



Other housing materials for the active zone (probe), like PE, PTFE, PVDF or PEEK on request.

Made in Germany

All specifications are subject to change without notice. (06/2013)